

**MAY 2024**



**ELLWOOD CITY K 12 BREAKFAST MENU**



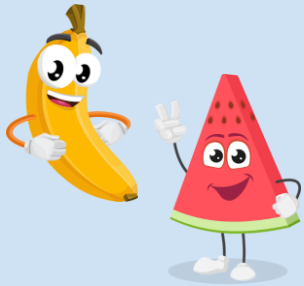
**What is a Meal?**

You must choose the following components for a qualified breakfast.

- ★ **Minimum of 1/2 cup serving of fruit must accompany a reimbursable breakfast.**
- ★ **Minimum of 2 grains or 1 grain and 1 meat or meat alternate**
- ★ **Choice of Milk - 1% white and chocolate**

**Featured Fruit May Include:**

Oranges, Apples, Bananas, Grapes, Pears, Peaches, Cantaloupe, Melon, Strawberries, Applesauce, Pineapple, Mandarin Oranges, 100% fruit juices, And More!!



**DAILY ALTERNATES**

Choice of Assorted Cereals with Mini Loaf or Popart, Benefit Bars, Uncrustables with cheese stick and more!

**Breakfast Prices:**

Student: Free  
Reduced: Free  
Adult: \$2.40

**General Manager:**

**Phone Number:**  
724-752-1591 Ext. 3020  
**Email:**  
metz@ecask12.org

USDA IS AN EQUAL OPPORTUNITY EMPLOYER

ALL MENU ITEMS ARE SUBJECT TO CHANGE DUE TO AVAILABILITY

Brand or equivalent foods offered/milk options defined



Monday	Tuesday	Wednesday	Thursday	Friday
<b>May-13</b>	<b>May-14</b>	<b>May-15</b>	<b>May-16</b>	<b>May-17</b>
<b>Entrée</b>	<b>Entrée</b>	<b>Entrée</b>	<b>Entrée</b>	<b>Entrée</b>
Funnel Cake (Pre K Cereal)	Chef's Choice (Pre K Cereal)	Sausage Egg Cheese on a WG Croissant	Pancakes w/ Bacon	Homemade Frosted Donut (Pre K Cereal)
<b>Featured Selections</b>	<b>Featured Selections</b>	<b>Featured Selections</b>	<b>Featured Selections</b>	<b>Featured Selections</b>
Assorted 100% Fruit Juice Assorted Fruits Assorted Canned Fruit Choice of Milk	Assorted 100% Fruit Juice Assorted Fruits Assorted Canned Fruit Choice of Milk	Assorted 100% Fruit Juice Assorted Fruits Assorted Canned Fruit Choice of Milk	Assorted 100% Fruit Juice Assorted Fruits Assorted Canned Fruit Choice of Milk	Assorted 100% Fruit Juice Assorted Fruits Assorted Canned Fruit Choice of Milk
<b>May-20</b>	<b>May-21</b>	<b>May-22</b>	<b>May-23</b>	<b>May-24</b>
<b>Entrée</b>	<b>Entrée</b>	<b>Entrée</b>	<b>Entrée</b>	<b>Entrée</b>
Belgian Waffle w/ Sausage	Mini Cini Rolls (Pre K Cereal)	Bacon Egg Cheese Maple Waffle Flatbread	Chef's Choice	Homemade Frosted Donut (Pre K Cereal)
<b>Featured Selections</b>	<b>Featured Selections</b>	<b>Featured Selections</b>	<b>Featured Selections</b>	<b>Featured Selections</b>
Assorted 100% Fruit Juice Assorted Fruits Assorted Canned Fruit Choice of Milk	Assorted 100% Fruit Juice Assorted Fruits Assorted Canned Fruit Choice of Milk	Assorted 100% Fruit Juice Assorted Fruits Assorted Canned Fruit Choice of Milk	Assorted 100% Fruit Juice Assorted Fruits Assorted Canned Fruit Choice of Milk	Assorted 100% Fruit Juice Assorted Fruits Assorted Canned Fruit Choice of Milk
<b>May-27</b>	<b>May-28</b>	<b>May-29</b>	<b>May-30</b>	<b>May-31</b>
	<b>Entrée</b>	<b>Entrée</b>	<b>Entrée</b>	<b>Entrée</b>
	Chef's Choice	Apple Frudel (Pre K Cereal)	Sausage Egg Cheese on a WG Croissant	Homemade Frosted Donut (Pre K Cereal)
	<b>Featured Selections</b>	<b>Featured Selections</b>	<b>Featured Selections</b>	<b>Featured Selections</b>
Assorted 100% Fruit Juice Assorted Fruits Assorted Canned Fruit Choice of Milk	Assorted 100% Fruit Juice Assorted Fruits Assorted Canned Fruit Choice of Milk	Assorted 100% Fruit Juice Assorted Fruits Assorted Canned Fruit Choice of Milk	Assorted 100% Fruit Juice Assorted Fruits Assorted Canned Fruit Choice of Milk	Assorted 100% Fruit Juice Assorted Fruits Assorted Canned Fruit Choice of Milk
<b>June-3</b>	<b>June-4</b>	<b>June-5</b>	<b>June-6</b>	<b>June-7</b>
<b>Entrée</b>	<b>Entrée</b>	<b>Entrée</b>	<b>Entrée</b>	
Banana or Blueberry Bread	Bacon, Egg & Cheese Bagel	Assorted Muffins	Scrambled Eggs, Sausage Patty w/WG Toast	
<b>Featured Selections</b>	<b>Featured Selections</b>	<b>Featured Selections</b>	<b>Featured Selections</b>	
Assorted 100% Fruit Juice Assorted Fruits Assorted Canned Fruit Choice of Milk	Assorted 100% Fruit Juice Assorted Fruits Assorted Canned Fruit Choice of Milk	Assorted 100% Fruit Juice Assorted Fruits Assorted Canned Fruit Choice of Milk	Assorted 100% Fruit Juice Assorted Fruits Assorted Canned Fruit Choice of Milk	
<b>June-10</b>	<b>June-11</b>	<b>June-12</b>	<b>June-13</b>	<b>June-14</b>
<b>June-17</b>	<b>June-18</b>	<b>June-19</b>	<b>June-20</b>	<b>June-21</b>